

PART NUMBER 6135SFM75		VERSION JD90	SHEET 2/8	REV A	
ZONE	SYM	DESCRIPTION	CHANGE DOC	DATE(YYYY-MM-DD)	APPROVED

CUSTOMER INSTALLATION POINTS			
ITEM	SHEET	NAME	REMARKS
A1	7	AIR - TURBO INLET	Ø 139.7, 44.45 ENGAGEMENT
BR1	3	BRACKET - FRONT LIFT EYE	26 X 40
BR2	5	BRACKET - REAR LIFT EYE	26 X 40
CO1	3	COOLANT - AUXILIARY RETURN	3/4-14 NPTF
CO2	4	COOLANT - AUXILIARY SUPPLY	1/2-14 NPTF
CO3	4	COOLANT - AUXILIARY SUPPLY	1/2-14 NPTF
CO4	3	COOLANT - AUXILIARY RETURN	3/4-14 NPT
DR1	4	DRIVE - MAG PICKUP	3/4-16 UNF-2B
EL1	6	ALTERNATOR	SEE OPTION DRAWING
EL2	5	STARTING MOTOR	SEE OPTION DRAWING
FL1	6	FUEL - INLET	13/16-16 UNC-2A (-08 ORFS)
FL2	6	FUEL - RETURN	11/16-16 UNC-2A (-06 ORFS)
MO1	5	MOUNTING HOLES - ENGINE BLOCK	12X M16 X 2.00-6H ∇ 28.5 MIN
MO2	6	MOUNTING HOLE - ACCESSORY	2 X M10 X 1.50-6H
MO3	6	MOUNTING HOLES - FAN PULLEY	6X M12 X 1.75-6H ∇ 22
MO4	3	MOUNTING HOLES - FLYWHEEL HOUSING	8X 5/8-11 UNC-2B
MO5	4	MOUNTING HOLES - FLYWHEEL HOUSING	12X 7/16-14 UNC-2B ∇ 19MIN Ø 530.22 B.C.
MO6	4	MOUNTING HOLES - FLYWHEEL	8X 1/2-13 UNC-2B ∇ 23MIN Ø 438.15 B.C.
MO7	4	MOUNTING HOLES - FLYWHEEL	10X 3/8-16 UNC-2B ∇ 22MIN Ø 342.9 B.C.
OPI	4	OIL PRESSURE TAP	1/4-18 NPTF
SWI	6	SEA WATER INLET	63.5 OD, 50 ENGAGEMENT
EX1	3	EXHAUST OUTLET	203.2 OD

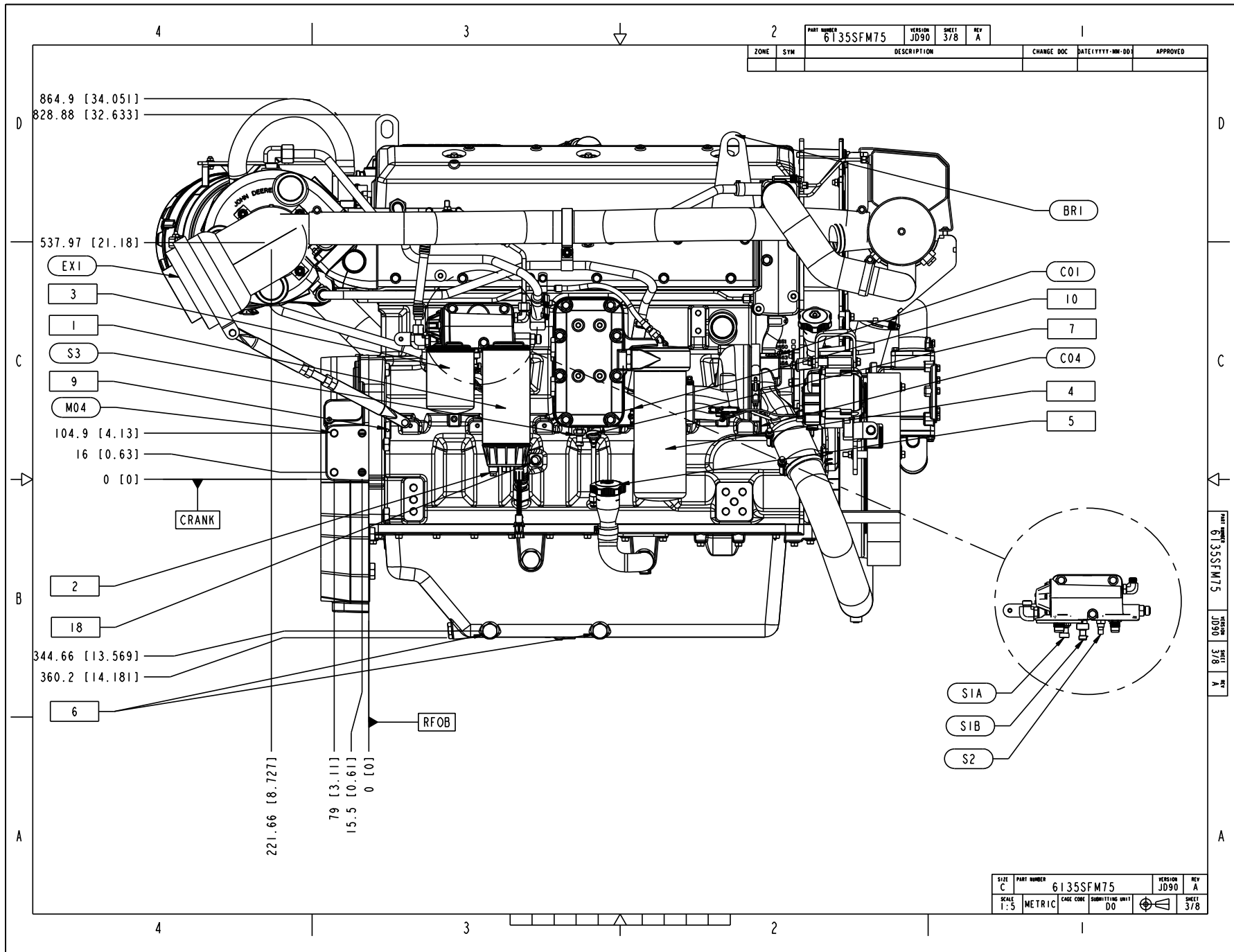
SENSOR LOCATIONS		
ITEM	SHEET	NAME
S1A	3	FUEL - LOW PRESSURE
S1B	3	FUEL - HIGH PRESSURE
S2	3	FUEL TEMPERATURE
S3	3	OIL PRESSURE
S4	4	WATER - IN - FUEL
S5	5	CAM POSITION
S6	5	AIR INLET TEMPERATURE
S7	6	CRANK POSITION
S8	7	COOLANT TEMPERATURE

CUSTOMER SERVICE POINTS			
ITEM	SHEET	NAME	REMARKS
1	3	FUEL - PRIMARY FILTER	30 REMOVAL DISTANCE
2	3	FUEL - WATER IN FUEL DRAIN	
3	3	FUEL - FINAL FILTER	30 REMOVAL DISTANCE
4	3	LUBE - OIL FILTER	36 REMOVAL DISTANCE
5	3	LUBE - OIL FILL	25 REMOVAL DISTANCE
6	3,4	LUBE - OIL DRAIN	3X 1 1/16-12 UN-2B
7	3	LUBE - DIPSTICK	
8	5	LUBE - OIL DRAIN	3/4" NPT
9	3,4	ROTATION TOOL OPENING	
10	3,4	COOLANT - DRAIN VALVE	1/2" ID HOSE HEAD
11	5	ROCKER ARM COVER	55 REMOVAL DISTANCE
12	5	CLOSED CRANKCASE VENTILATION SYSTEM	FILTER SERVICE INDICATOR
13	4,5,7	AIR CLEANER	314 REMOVAL DISTANCE
14	5	CONDENSATION DRAIN	5/8" ID HOSE BEAD
15	5,6	ZINC ANODES	4X
16	5,6	COOLANT DRAIN	1/4 NPT
17	6	SEA WATER PUMP	MIN 150 IMPELLER REMOVAL DISTANCE
18	3	LOCK PIN TIMING HOLE	M14 X 1.50 O-RING PORT
19	5	CLOSED CRANKCASE VENTILATION SYSTEM	101.6 REMOVAL DISTANCE

SIZE C	PART NUMBER 6135SFM75	VERSION JD90	REV A
SCALE 1:5	METRIC	CAGE CODE SUBMITTING UNIT DO	SHEET 2/8

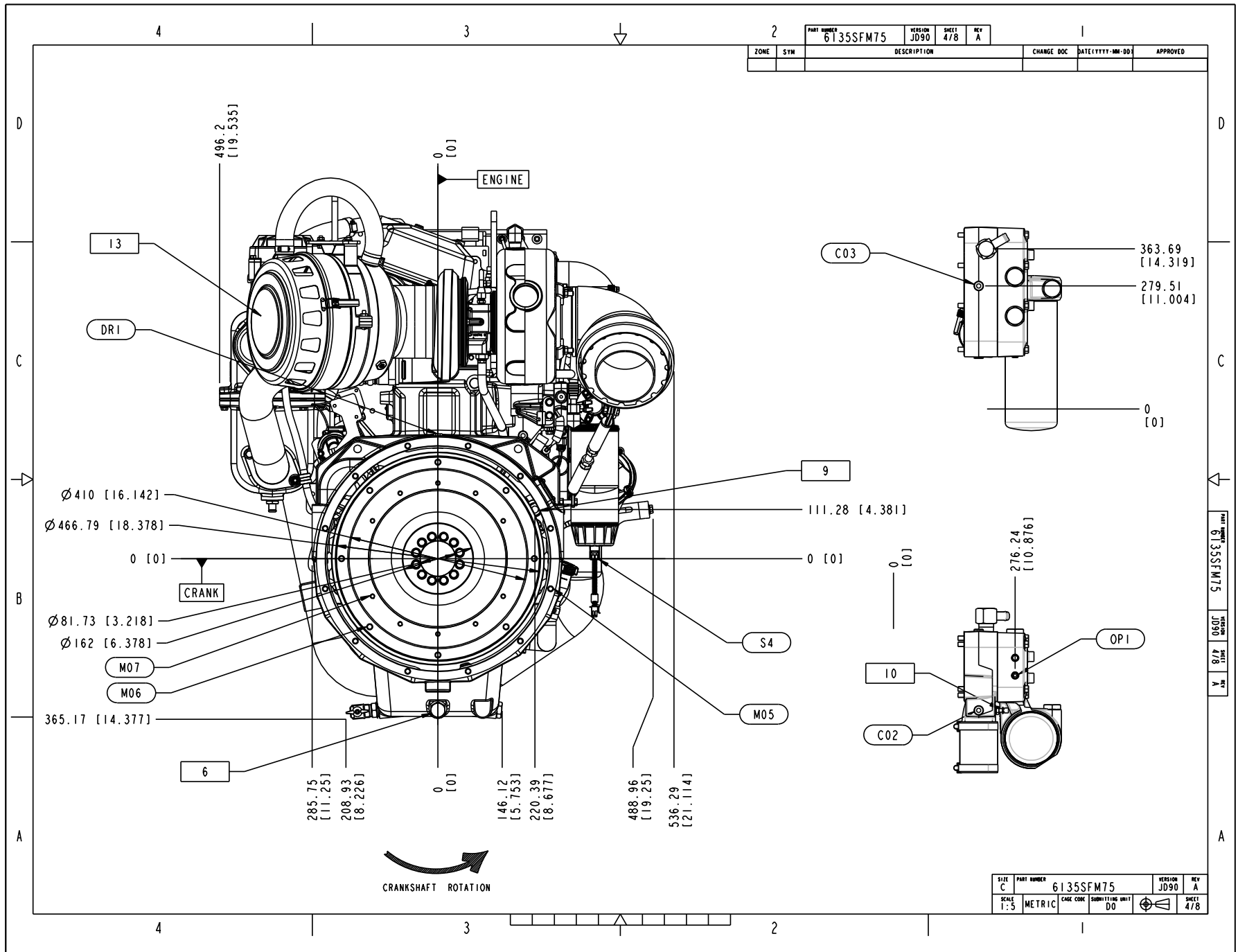
# PowerTech 13.5 L ENGINE

# 6135SFM75



# PowerTech 13.5 L ENGINE

# 6135SFM75



# PowerTech 13.5 L ENGINE

# 6135SFM75

