

PowerTech 6.8 L ENGINE

6068TFM76 (HE)

4	3	2	1																																																																																																																																								
<table border="1" style="width: 100%; border-collapse: collapse;"> <thead> <tr> <th colspan="2">OPTIONS SHOWN</th> </tr> <tr> <th>OPTION</th> <th>GROUP NAME</th> </tr> </thead> <tbody> <tr><td>1102_RE59332</td><td>ROCKER ARM COVER, FRONT FILL</td></tr> <tr><td>1299_RE57761</td><td>NO OIL FILL</td></tr> <tr><td>1323_RE508909</td><td>CRANKSHAFT PULLEY - 168mm DIA</td></tr> <tr><td>1405_RE59303</td><td>FLYWHEEL HOUSING SAE #3 LHS</td></tr> <tr><td>1503_RE59281</td><td>FLYWHEEL, 11.5in OC CLUTCH</td></tr> <tr><td>167L_RE521517</td><td>STANADYNE DB4 FIP</td></tr> <tr><td>17BH_RE521204</td><td>AIR INLET</td></tr> <tr><td>1945_RE502536</td><td>OIL PAN</td></tr> <tr><td>2001_RE58175</td><td>WATER PUMP PULLEY</td></tr> <tr><td>2150_RE520875</td><td>THERMOSTAT COVER</td></tr> <tr><td>2206_RE502827</td><td>THERMOSTAT</td></tr> <tr><td>2399_RE59786</td><td>NO FAN DRIVE</td></tr> <tr><td>240N_RE502537</td><td>FAN BELT WITH BELT GUARD</td></tr> <tr><td>2599_RE59725</td><td>NO FAN</td></tr> <tr><td>2699S_RE59760</td><td>NO BLOCK HEATER</td></tr> <tr><td>2702_RE502541</td><td>NO HEAT EXCHANGER</td></tr> <tr><td>2839_RE502542</td><td>EXHAUST MANIFOLD</td></tr> <tr><td>2915D_RE501631</td><td>VENT HOSE</td></tr> <tr><td>3006_RE70964</td><td>STARTING MOTOR, 12V NIPPONDENSO R4</td></tr> <tr><td>3138_RE509779</td><td>ALTERNATOR - 12V, 65 AMP</td></tr> <tr><td>35DP_RE521522</td><td>FUEL FILTER</td></tr> <tr><td>3602_RE58179</td><td>FRONT PLATE</td></tr> <tr><td>3701_RE57626</td><td>FUEL TRANSFER PUMP</td></tr> <tr><td>3999_RE59829</td><td>NO THERMOSTAT HOUSING</td></tr> <tr><td>4002_RE58181</td><td>STANDARD RHS DIPSTICK</td></tr> <tr><td>4199_RE59748</td><td>NO FRONT AUX DRIVE</td></tr> <tr><td>4399_RE59828</td><td>NO STARTING AID</td></tr> <tr><td>4412_RE502557</td><td>TIMING GEAR COVER</td></tr> <tr><td>4613_RE507151</td><td>BLOCK</td></tr> <tr><td>4712_RE506346</td><td>CRANKSHAFT</td></tr> <tr><td>4820_RE507801</td><td>CONNECTING RODS AND PISTONS</td></tr> <tr><td>4902_RE59334</td><td>VALVE ACTUATING</td></tr> <tr><td>5001_RE57763</td><td>OIL INTAKE</td></tr> <tr><td>5107_RE59335</td><td>CYLINDER HEAD, MEDIUM SWIRL</td></tr> <tr><td>5202_RE59502</td><td>AUXILIARY DRIVE</td></tr> <tr><td>5399_RE509683</td><td>NO FUEL HEATER</td></tr> <tr><td>5709_RE504712</td><td>WATER PUMP INLET</td></tr> <tr><td>5902_RE59755</td><td>OIL COOLER - 7 PLATE</td></tr> <tr><td>6099_RE60169</td><td>NO AUX DRIVE PULLEY</td></tr> <tr><td>6202_RE59734</td><td>ALTERNATOR MOUNTING</td></tr> <tr><td>6357_RE521516</td><td>LOW PRESSURE LINES</td></tr> <tr><td>6403_RE50015</td><td>EXHAUST ELBOW - DRY</td></tr> <tr><td>65LU_RE521595</td><td>TURBOCHARGER</td></tr> <tr><td>6698_RE500556</td><td>NO TEMPERATURE SWITCH</td></tr> <tr><td>6716_RE521445</td><td>TACHOMETER SENSORS</td></tr> <tr><td>6895_RE508946</td><td>DAMPER</td></tr> <tr><td>6901_RE59440</td><td>SERIAL NUMBER PLATE</td></tr> <tr><td>7499_RE59761</td><td>NO A/C MOUNTING</td></tr> <tr><td>7699_RE60160</td><td>NO OIL PRESSURE SWITCH</td></tr> <tr><td>8020_RE502546</td><td>PUMP, SEA WATER</td></tr> <tr><td>8157_RE521534</td><td>WATER SEPARATOR</td></tr> <tr><td>8418_RE521279</td><td>WIRING HARNESS</td></tr> <tr><td>8699_RE59784</td><td>NO FAN PULLEY</td></tr> <tr><td>8712_RE502596</td><td>BELT TENSIONER, MANUAL</td></tr> <tr><td>8843_RE508950</td><td>OIL FILTER, REAR</td></tr> <tr><td>9826_RE518085</td><td>ENGINE HANGER STRAP</td></tr> </tbody> </table>		OPTIONS SHOWN		OPTION	GROUP NAME	1102_RE59332	ROCKER ARM COVER, FRONT FILL	1299_RE57761	NO OIL FILL	1323_RE508909	CRANKSHAFT PULLEY - 168mm DIA	1405_RE59303	FLYWHEEL HOUSING SAE #3 LHS	1503_RE59281	FLYWHEEL, 11.5in OC CLUTCH	167L_RE521517	STANADYNE DB4 FIP	17BH_RE521204	AIR INLET	1945_RE502536	OIL PAN	2001_RE58175	WATER PUMP PULLEY	2150_RE520875	THERMOSTAT COVER	2206_RE502827	THERMOSTAT	2399_RE59786	NO FAN DRIVE	240N_RE502537	FAN BELT WITH BELT GUARD	2599_RE59725	NO FAN	2699S_RE59760	NO BLOCK HEATER	2702_RE502541	NO HEAT EXCHANGER	2839_RE502542	EXHAUST MANIFOLD	2915D_RE501631	VENT HOSE	3006_RE70964	STARTING MOTOR, 12V NIPPONDENSO R4	3138_RE509779	ALTERNATOR - 12V, 65 AMP	35DP_RE521522	FUEL FILTER	3602_RE58179	FRONT PLATE	3701_RE57626	FUEL TRANSFER PUMP	3999_RE59829	NO THERMOSTAT HOUSING	4002_RE58181	STANDARD RHS DIPSTICK	4199_RE59748	NO FRONT AUX DRIVE	4399_RE59828	NO STARTING AID	4412_RE502557	TIMING GEAR COVER	4613_RE507151	BLOCK	4712_RE506346	CRANKSHAFT	4820_RE507801	CONNECTING RODS AND PISTONS	4902_RE59334	VALVE ACTUATING	5001_RE57763	OIL INTAKE	5107_RE59335	CYLINDER HEAD, MEDIUM SWIRL	5202_RE59502	AUXILIARY DRIVE	5399_RE509683	NO FUEL HEATER	5709_RE504712	WATER PUMP INLET	5902_RE59755	OIL COOLER - 7 PLATE	6099_RE60169	NO AUX DRIVE PULLEY	6202_RE59734	ALTERNATOR MOUNTING	6357_RE521516	LOW PRESSURE LINES	6403_RE50015	EXHAUST ELBOW - DRY	65LU_RE521595	TURBOCHARGER	6698_RE500556	NO TEMPERATURE SWITCH	6716_RE521445	TACHOMETER SENSORS	6895_RE508946	DAMPER	6901_RE59440	SERIAL NUMBER PLATE	7499_RE59761	NO A/C MOUNTING	7699_RE60160	NO OIL PRESSURE SWITCH	8020_RE502546	PUMP, SEA WATER	8157_RE521534	WATER SEPARATOR	8418_RE521279	WIRING HARNESS	8699_RE59784	NO FAN PULLEY	8712_RE502596	BELT TENSIONER, MANUAL	8843_RE508950	OIL FILTER, REAR	9826_RE518085	ENGINE HANGER STRAP	<table border="1" style="width: 100%; border-collapse: collapse;"> <thead> <tr> <th>ZONE</th> <th>SYM</th> <th>DESCRIPTION</th> <th>CHANGE DOC</th> <th>DATE (YYYY-MM-DD)</th> <th>APPROVED</th> </tr> </thead> <tbody> <tr> <td> </td> <td> </td> <td> </td> <td>XXX</td> <td>XXX</td> <td> </td> </tr> </tbody> </table>	ZONE	SYM	DESCRIPTION	CHANGE DOC	DATE (YYYY-MM-DD)	APPROVED				XXX	XXX		<table border="1" style="width: 100%; border-collapse: collapse;"> <thead> <tr> <th>PART NUMBER</th> <th>VERSION</th> <th>SHEET</th> <th>REV</th> </tr> </thead> <tbody> <tr> <td>RE523692</td> <td>RG40</td> <td>1/8</td> <td>A</td> </tr> </tbody> </table>	PART NUMBER	VERSION	SHEET	REV	RE523692	RG40	1/8	A
OPTIONS SHOWN																																																																																																																																											
OPTION	GROUP NAME																																																																																																																																										
1102_RE59332	ROCKER ARM COVER, FRONT FILL																																																																																																																																										
1299_RE57761	NO OIL FILL																																																																																																																																										
1323_RE508909	CRANKSHAFT PULLEY - 168mm DIA																																																																																																																																										
1405_RE59303	FLYWHEEL HOUSING SAE #3 LHS																																																																																																																																										
1503_RE59281	FLYWHEEL, 11.5in OC CLUTCH																																																																																																																																										
167L_RE521517	STANADYNE DB4 FIP																																																																																																																																										
17BH_RE521204	AIR INLET																																																																																																																																										
1945_RE502536	OIL PAN																																																																																																																																										
2001_RE58175	WATER PUMP PULLEY																																																																																																																																										
2150_RE520875	THERMOSTAT COVER																																																																																																																																										
2206_RE502827	THERMOSTAT																																																																																																																																										
2399_RE59786	NO FAN DRIVE																																																																																																																																										
240N_RE502537	FAN BELT WITH BELT GUARD																																																																																																																																										
2599_RE59725	NO FAN																																																																																																																																										
2699S_RE59760	NO BLOCK HEATER																																																																																																																																										
2702_RE502541	NO HEAT EXCHANGER																																																																																																																																										
2839_RE502542	EXHAUST MANIFOLD																																																																																																																																										
2915D_RE501631	VENT HOSE																																																																																																																																										
3006_RE70964	STARTING MOTOR, 12V NIPPONDENSO R4																																																																																																																																										
3138_RE509779	ALTERNATOR - 12V, 65 AMP																																																																																																																																										
35DP_RE521522	FUEL FILTER																																																																																																																																										
3602_RE58179	FRONT PLATE																																																																																																																																										
3701_RE57626	FUEL TRANSFER PUMP																																																																																																																																										
3999_RE59829	NO THERMOSTAT HOUSING																																																																																																																																										
4002_RE58181	STANDARD RHS DIPSTICK																																																																																																																																										
4199_RE59748	NO FRONT AUX DRIVE																																																																																																																																										
4399_RE59828	NO STARTING AID																																																																																																																																										
4412_RE502557	TIMING GEAR COVER																																																																																																																																										
4613_RE507151	BLOCK																																																																																																																																										
4712_RE506346	CRANKSHAFT																																																																																																																																										
4820_RE507801	CONNECTING RODS AND PISTONS																																																																																																																																										
4902_RE59334	VALVE ACTUATING																																																																																																																																										
5001_RE57763	OIL INTAKE																																																																																																																																										
5107_RE59335	CYLINDER HEAD, MEDIUM SWIRL																																																																																																																																										
5202_RE59502	AUXILIARY DRIVE																																																																																																																																										
5399_RE509683	NO FUEL HEATER																																																																																																																																										
5709_RE504712	WATER PUMP INLET																																																																																																																																										
5902_RE59755	OIL COOLER - 7 PLATE																																																																																																																																										
6099_RE60169	NO AUX DRIVE PULLEY																																																																																																																																										
6202_RE59734	ALTERNATOR MOUNTING																																																																																																																																										
6357_RE521516	LOW PRESSURE LINES																																																																																																																																										
6403_RE50015	EXHAUST ELBOW - DRY																																																																																																																																										
65LU_RE521595	TURBOCHARGER																																																																																																																																										
6698_RE500556	NO TEMPERATURE SWITCH																																																																																																																																										
6716_RE521445	TACHOMETER SENSORS																																																																																																																																										
6895_RE508946	DAMPER																																																																																																																																										
6901_RE59440	SERIAL NUMBER PLATE																																																																																																																																										
7499_RE59761	NO A/C MOUNTING																																																																																																																																										
7699_RE60160	NO OIL PRESSURE SWITCH																																																																																																																																										
8020_RE502546	PUMP, SEA WATER																																																																																																																																										
8157_RE521534	WATER SEPARATOR																																																																																																																																										
8418_RE521279	WIRING HARNESS																																																																																																																																										
8699_RE59784	NO FAN PULLEY																																																																																																																																										
8712_RE502596	BELT TENSIONER, MANUAL																																																																																																																																										
8843_RE508950	OIL FILTER, REAR																																																																																																																																										
9826_RE518085	ENGINE HANGER STRAP																																																																																																																																										
ZONE	SYM	DESCRIPTION	CHANGE DOC	DATE (YYYY-MM-DD)	APPROVED																																																																																																																																						
			XXX	XXX																																																																																																																																							
PART NUMBER	VERSION	SHEET	REV																																																																																																																																								
RE523692	RG40	1/8	A																																																																																																																																								
<p>FOR CENTER-OF-GRAVITY OR WEIGHT INFORMATION, REFER TO THE ENGINE PERFORMANCE CURVE(S).</p>		<table border="1" style="width: 100%; border-collapse: collapse;"> <tr> <td style="text-align: center;">FAN HEIGHT mm/in</td> </tr> <tr> <td style="text-align: center;"> </td> </tr> </table>		FAN HEIGHT mm/in																																																																																																																																							
FAN HEIGHT mm/in																																																																																																																																											
<p>ORIGIN - CENTERLINE OF CRANKSHAFT AT REAR FACE OF BLOCK</p>																																																																																																																																											
<table border="1" style="width: 100%; border-collapse: collapse;"> <thead> <tr> <th>MODEL RL</th> <th>MODEL REV</th> </tr> </thead> <tbody> <tr><td>RESTRICTED</td><td>1.1*</td></tr> <tr><td>DRW RL</td><td>DRW REV</td></tr> <tr><td>RESTRICTED</td><td>1.1*</td></tr> <tr><td>SOURCING</td><td>OPEN</td></tr> <tr><td></td><td>CLOSED</td></tr> </tbody> </table>		MODEL RL	MODEL REV	RESTRICTED	1.1*	DRW RL	DRW REV	RESTRICTED	1.1*	SOURCING	OPEN		CLOSED	<table border="1" style="width: 100%; border-collapse: collapse;"> <tr> <td>MATERIAL SEE DETAILS</td> <td> <small>THIS DRAWING AND THE INFORMATION CONTAINED HEREIN ARE THE PROPERTY OF DEERE & COMPANY. ALL RIGHTS ARE RESERVED. NO PART OF THIS DRAWING IS TO BE REPRODUCED OR TRANSMITTED IN ANY FORM OR BY ANY MEANS, ELECTRONIC OR MECHANICAL, INCLUDING PHOTOCOPYING, RECORDING, OR BY ANY INFORMATION STORAGE AND RETRIEVAL SYSTEM, WITHOUT THE WRITTEN PERMISSION OF DEERE & COMPANY.</small> </td> </tr> <tr> <td> DEERE & COMPANY MOLINE, ILLINOIS 61265 </td> <td> LOCATION/ASSEMBLY DRAWING 6.8L (CD6068TFM76) MARINE </td> </tr> <tr> <td> REFERENCE: DS-5113 OBSOLETE DATE: 16APR04 </td> <td> PART NUMBER RE523692 SCALE 1:5 METRIC CASE CODE SUBMITTING UNIT RG </td> </tr> <tr> <td> YEAR/ISSUE RG40 SHEET 1/8 REV A </td> <td> Pro/ENGINEER </td> </tr> </table>		MATERIAL SEE DETAILS	<small>THIS DRAWING AND THE INFORMATION CONTAINED HEREIN ARE THE PROPERTY OF DEERE & COMPANY. ALL RIGHTS ARE RESERVED. NO PART OF THIS DRAWING IS TO BE REPRODUCED OR TRANSMITTED IN ANY FORM OR BY ANY MEANS, ELECTRONIC OR MECHANICAL, INCLUDING PHOTOCOPYING, RECORDING, OR BY ANY INFORMATION STORAGE AND RETRIEVAL SYSTEM, WITHOUT THE WRITTEN PERMISSION OF DEERE & COMPANY.</small>	DEERE & COMPANY MOLINE, ILLINOIS 61265	LOCATION/ASSEMBLY DRAWING 6.8L (CD6068TFM76) MARINE	REFERENCE: DS-5113 OBSOLETE DATE: 16APR04	PART NUMBER RE523692 SCALE 1:5 METRIC CASE CODE SUBMITTING UNIT RG	YEAR/ISSUE RG40 SHEET 1/8 REV A	Pro/ENGINEER																																																																																																																				
MODEL RL	MODEL REV																																																																																																																																										
RESTRICTED	1.1*																																																																																																																																										
DRW RL	DRW REV																																																																																																																																										
RESTRICTED	1.1*																																																																																																																																										
SOURCING	OPEN																																																																																																																																										
	CLOSED																																																																																																																																										
MATERIAL SEE DETAILS	<small>THIS DRAWING AND THE INFORMATION CONTAINED HEREIN ARE THE PROPERTY OF DEERE & COMPANY. ALL RIGHTS ARE RESERVED. NO PART OF THIS DRAWING IS TO BE REPRODUCED OR TRANSMITTED IN ANY FORM OR BY ANY MEANS, ELECTRONIC OR MECHANICAL, INCLUDING PHOTOCOPYING, RECORDING, OR BY ANY INFORMATION STORAGE AND RETRIEVAL SYSTEM, WITHOUT THE WRITTEN PERMISSION OF DEERE & COMPANY.</small>																																																																																																																																										
DEERE & COMPANY MOLINE, ILLINOIS 61265	LOCATION/ASSEMBLY DRAWING 6.8L (CD6068TFM76) MARINE																																																																																																																																										
REFERENCE: DS-5113 OBSOLETE DATE: 16APR04	PART NUMBER RE523692 SCALE 1:5 METRIC CASE CODE SUBMITTING UNIT RG																																																																																																																																										
YEAR/ISSUE RG40 SHEET 1/8 REV A	Pro/ENGINEER																																																																																																																																										

4	3	2	1
CUSTOMER INSTALLATION POINTS		CUSTOMER INSTALLATION POINTS	
ITEM	SHEET	NAME	REMARKS
A11	5	AIR - TURBO INLET	
A12	3	AIR - STARTING AID PORT	7/8 - 14 UNF-2B
A13	3	AIR - PRESSURE PORT - PLUGGED	1/8 - 27 NPS
BR1	3	BRACKET - REAR LIFT STRAP	
BR2	5	BRACKET - FRONT LIFT STRAP	
CO1	4	COOLANT - HEATER SUPPLY	M18 X 1.5
CO2	3	COOLANT - HEATER RETURN	M18 X 1.5 ∇ 14.5 O-RING PORT
CO3	3	COOLANT - BLOCK HEATER	1 5/8 - 12 UN-2B
CO4	6	COOLANT - INLET	
CO5	6	COOLANT - OUTLET	
CO6	7	COOLANT - TEMP. WARNING SWITCH	1/2 - 14 NPS
CO7	5	COOLANT - TEMPERATURE SENSOR	
CO8	3	COOLANT - HEATER/OUTLET OPTIONAL	1 5/8 - 12 UN-2B
DR1	4	DRIVE - AUXILLARY	SEE OPTION DRAWING
EL1	5	FUEL INJECTION PUMP	SEE OPTION DRAWING
EL2	6	ALTERNATOR	SEE OPTION DRAWING
EL3	3 OR 5	STARTING MOTOR	SEE OPTION DRAWING
EL4	7	MAG PICKUP	M20 X 1.5 - 6H
EL5	3 OR 5	BATTERY TERMINAL	
EX1	5	EXHAUST OUTLET	
FL1	3	FUEL - INLET	
FL2	7	FUEL - LEAKOFF - REAR	
FL3	7	FUEL - LEAKOFF - FRONT	
MO1	6	MOUNTING HOLES	4X M16 X 2.00-6H ∇ 31.5
MO2	6	MOUNTING - DOWEL HOLES	2X \varnothing 15.926 \pm 0.025 [.627 \pm .001]
MO3	3,5	MOUNTING HOLES	6X M12 X 1.75-6H ∇ 22
MO4	6	MOUNTING HOLES - FAN	
MO5	4	MOUNTING HOLES - ACCESSORY	2X M10 X 1.50-6H ∇ 18.5
MO6	5	MOUNTING HOLES - SPEED CTRL BRKT	2X M10 X 1.50-6H ∇ 18.5
MO7	3	MOUNTING HOLES - ACCESSORY	2X M8 X 1.25-6H ∇ 14 (BLOCK)
MO8	5	MOUNTING HOLE - ACCESSORY	M14 X 2 - 6H ∇ 23
MO9	4	MOUNTING HOLES	
MO10	3,5	MOUNTING HOLES - OIL FILL	4X M8 X 1.25-6H ∇ 15 (BLOCK)
MO11	3	MOUNTING HOLES - FLYWHEEL HOUSING	
MO12	5	MOUNTING HOLE - ACCESSORY	M10 X 1.50-6H ∇ 18.5
MO13	5	MOUNTING HOLES - ACCESSORY	2X M10 X 1.50-6H ∇ 18.5
MO14	3	MOUNTING HOLE - ACCESSORY	M12 X 1.50-6H ∇ 22
ITEM	SHEET	NAME	REMARKS
MO15	7	MOUNTING HOLES - ACCESSORY	2X M10 X 1.50-6H ∇ 18.5
MO16	7	MOUNTING HOLE - ACCESSORY	M12 X 1.75-6H ∇ 22
MO17	7	MOUNTING HOLES - ACCESSORY	3X M10 X 1.50-6H ∇ 18.5
MO18	7	MOUNTING HOLE - ACCESSORY	M12 X 1.75-6H ∇ 22
MO19	6	MOUNTING HOLES - FAN	
MO20	4	MOUNTING HOLES - FLYWHEEL	
MO21	6	MOUNTING HOLES - DRIVE PULLEY	
MO22	3	MOUNTING HOLES	3X M10 X 1.5-6H ∇ 18.5
MO23	7	MOUNTING HOLES - ACCESSORY	3X M12 X 1.75-6H ∇ 25
MO24	5	MOUNTING HOLE - ACCESSORY	M14 X 2 - 6H ∇ 23
OP1	5	OIL PRESSURE PORT	6X 1/8 - 27 NPTF
OP2	5	OIL - TURBO DRAIN	
VE1	3	VENT TUBE	
CUSTOMER SERVICE POINTS			
ITEM	SHEET	NAME	REMARKS
1	3	OIL FILL - ROCKER ARM COVER	20 MM REMOVAL CLEARANCE
1A	3	OIL FILL - RIGHT SIDE	20 MM REMOVAL CLEARANCE
1B	5	OIL FILL - LEFT SIDE	20 MM REMOVAL CLEARANCE
2	3,5	OIL DRAIN	
3	3	OIL FILTER	25 MM REMOVAL CLEARANCE
4	5	DIPSTICK - LEFT SIDE	275 MM REMOVAL CLEARANCE
4A	3	DIPSTICK - RIGHT SIDE	275 MM REMOVAL CLEARANCE
5	3	FUEL FILTER DRAIN	5 MM REMOVAL CLEARANCE
6	5	COOLANT DRAIN	1/4 - 18 NPTF; 10 MM REM. CLEARANCE
7	3	OIL COOLER WATER DRAIN	M12 X 1.5; 25 MM REM. CLEARANCE

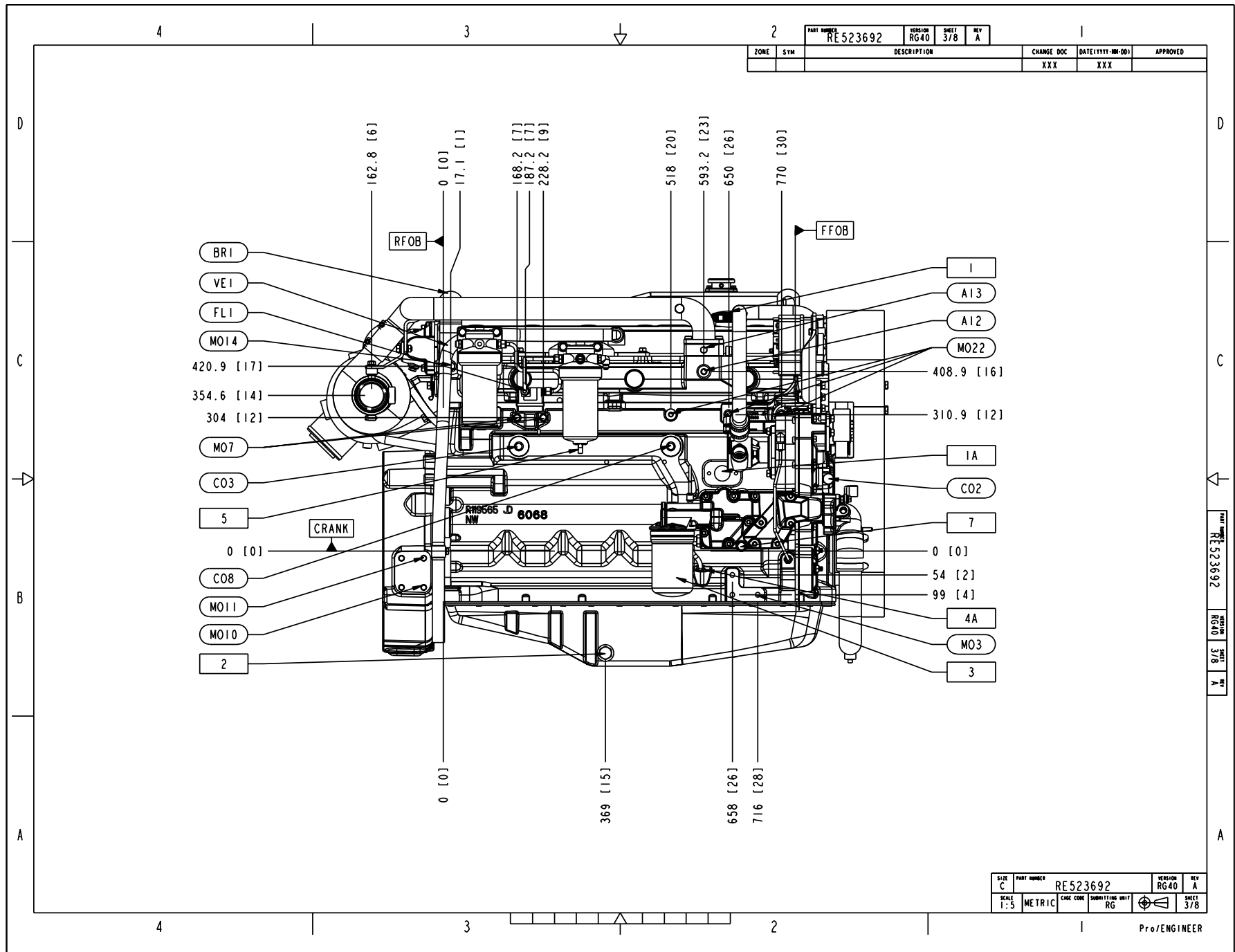
ZONE	SYM	DESCRIPTION	CHANGE DOC	DATE(YYYY-MM-DD)	APPROVED
			XXX	XXX	

SIZE	PART NUMBER	VERSION	SHEET	REV	
C	RE523692	RG40	2/8	A	
SCALE	METRIC	CAGE CODE	SUBMITTING UNIT		
1:5		RG			

Pro/ENGINEER

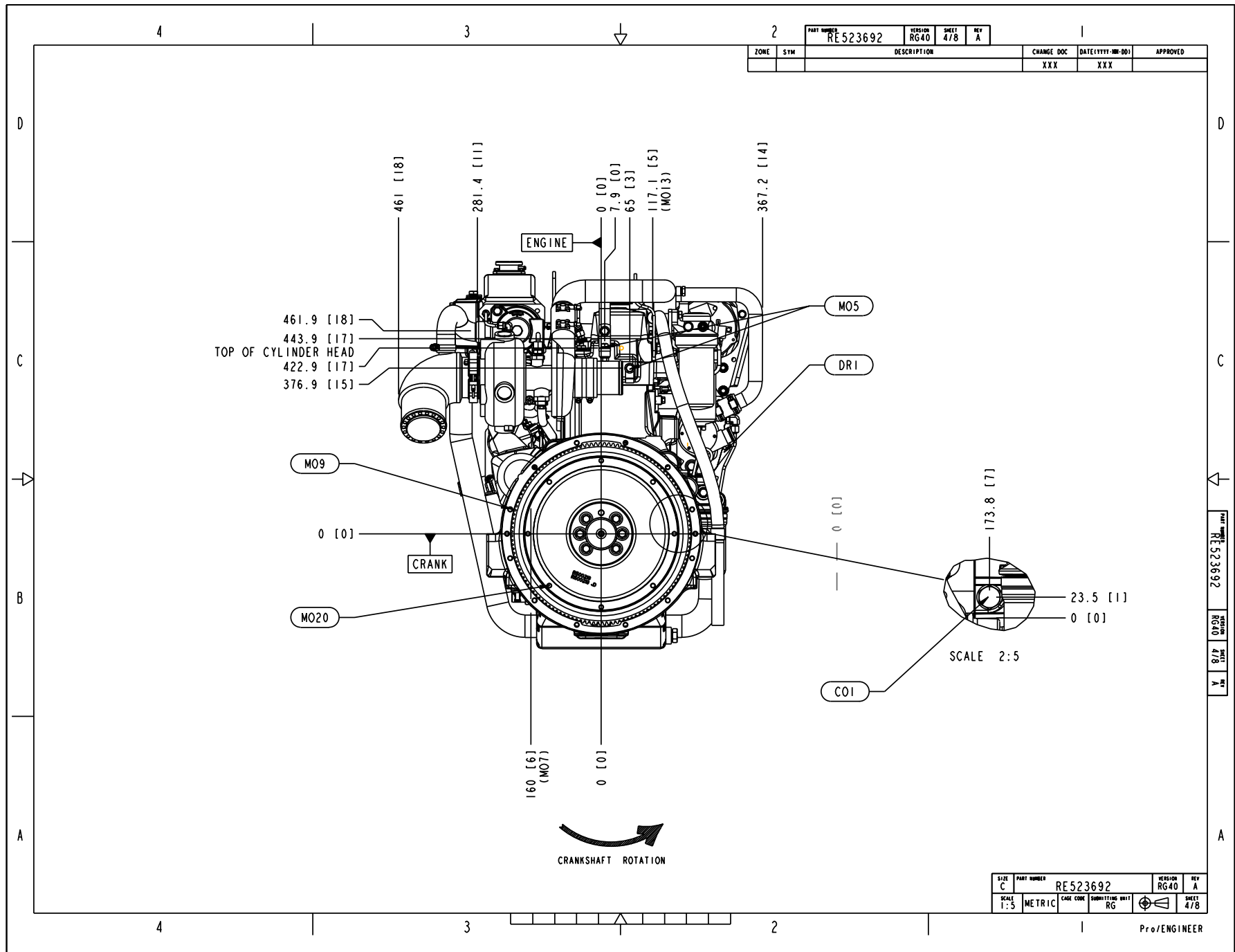
PowerTech 6.8 L ENGINE

6068TFM76 (HE)



PowerTech 6.8 L ENGINE

6068TFM76 (HE)



ZONE	SYM	DESCRIPTION	CHANGE DOC	DATE (YYYY-MM-DD)	APPROVED
			XXX	XXX	

PART NUMBER	VERSION	SHEET	REV
RE523692	RG40	4/8	A

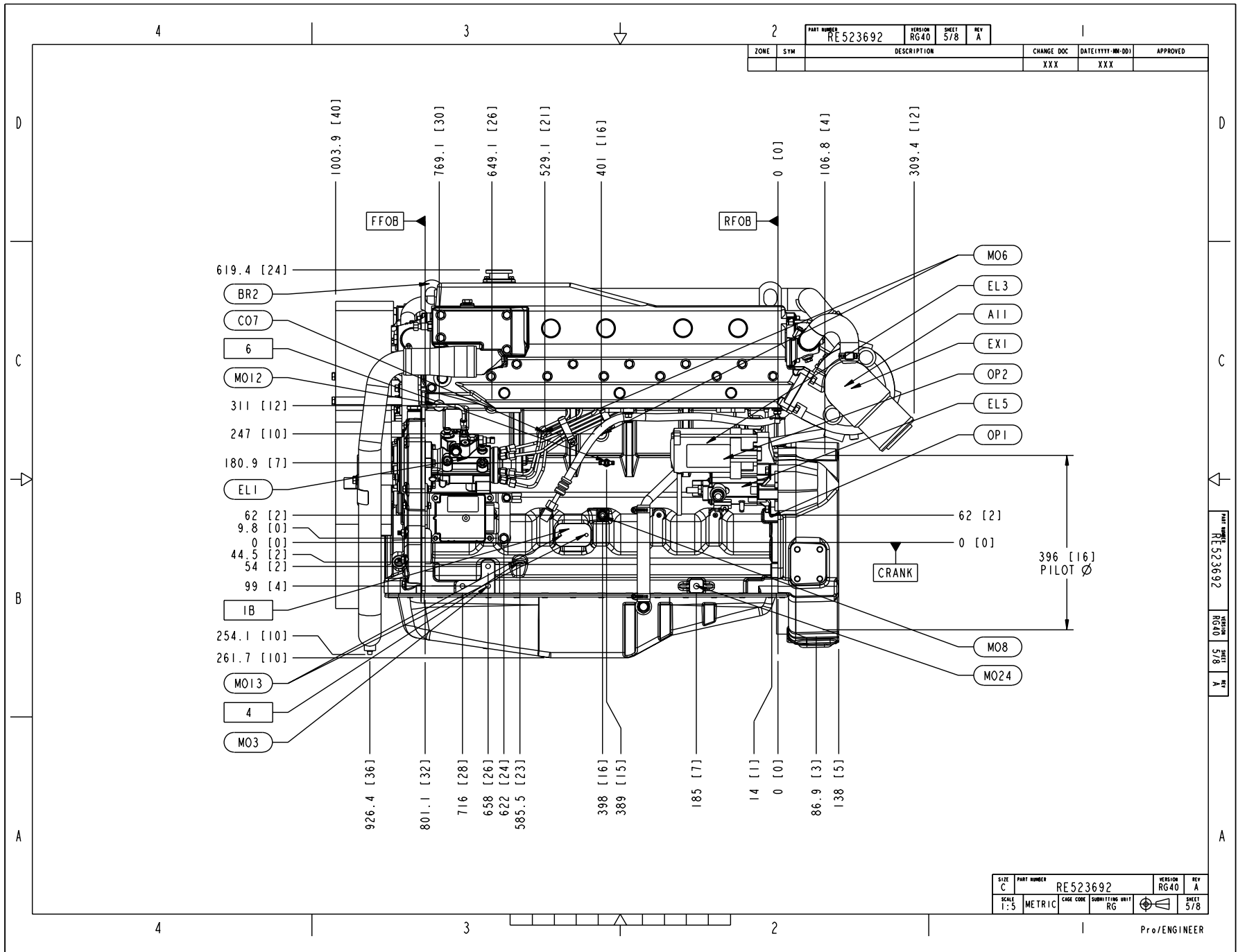
UNIT	DESCRIPTION
mm	RE523692
mm	RG40
mm	4/8
mm	A

SIZE	PART NUMBER	VERSION	REV
C	RE523692	RG40	A
SCALE	METRIC	CAGE CODE	QUANTITY UNIT
1:5	METRIC	RG	RG
			4/8

Pro/ENGINEER

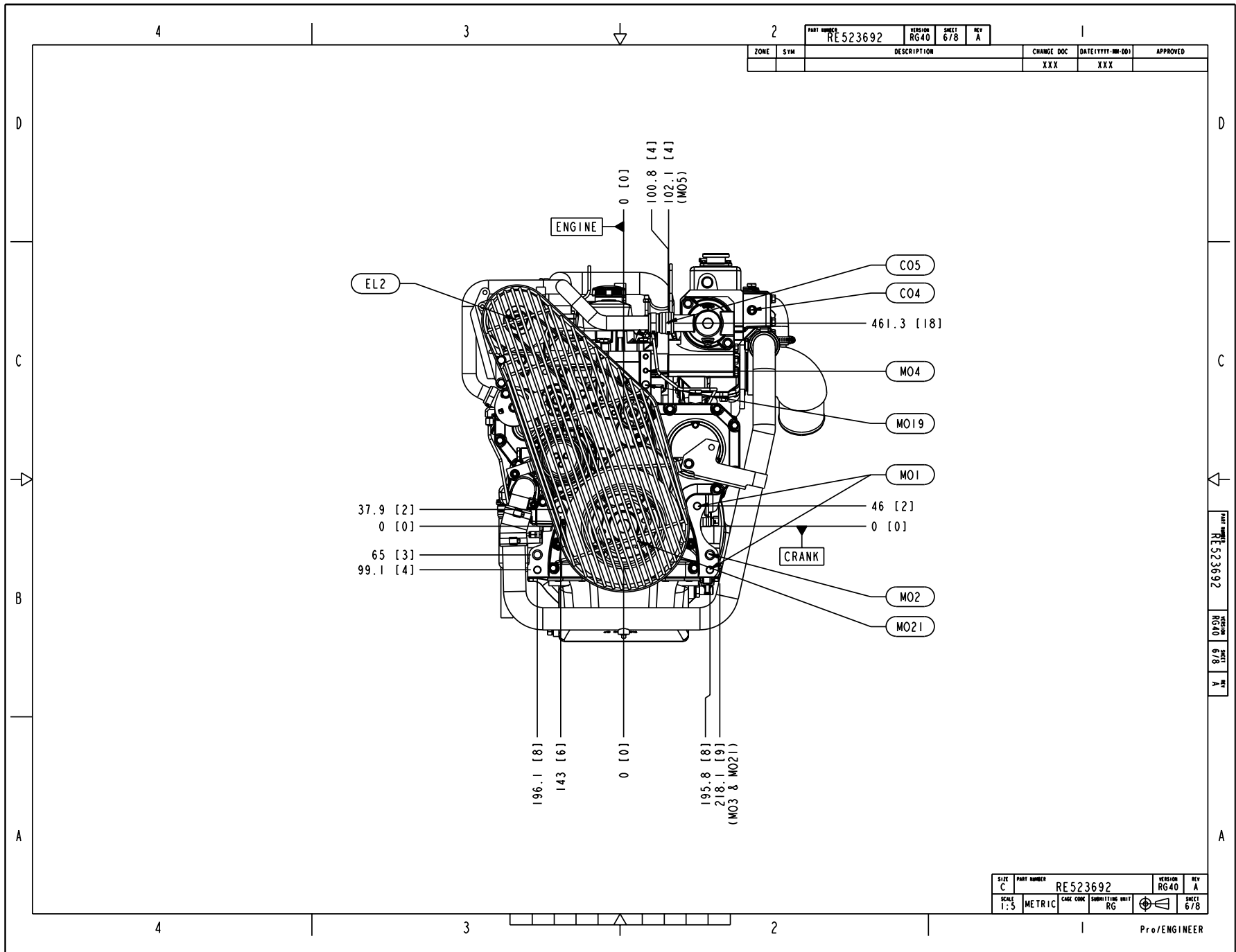
PowerTech 6.8 L ENGINE

6068TFM76 (HE)



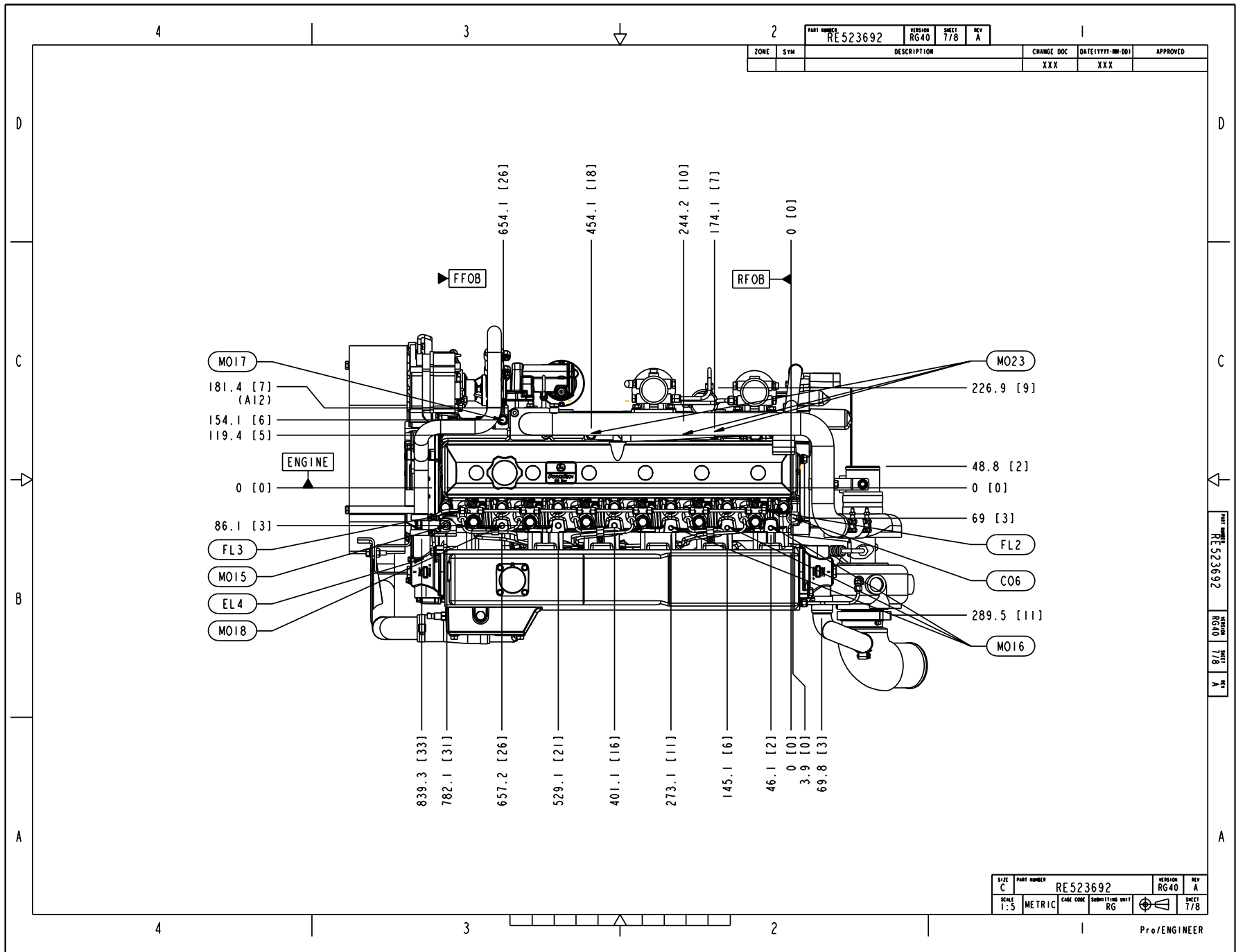
PowerTech 6.8 L ENGINE

6068TFM76 (HE)



PowerTech 6.8 L ENGINE

6068TFM76 (HE)



PowerTech 6.8 L ENGINE

6068TFM76 (HE)

