

# PowerTech 4.5 L ENGINE

# 4045TFM75 (HE)

4	3	2	1
---	---	---	---

ZONE	SYM	DESCRIPTION	CHANGE DOC	DATE(YYYY-MM-DD)	APPROVED
			XXX	XXX	

PART NUMBER	VERSION	SHEET	REV
RE523686	RG40	1/8	X

OPTIONS SHOWN	
OPTION	GROUP NAME
1101_RE57606	ROCKERARM COVER FRONT FILL
1299_RE57761	NO OIL FILL
1328_RE515238	CRANKSHAFT PULLEY - 168mm DIA
1405_RE59303	FLYWHEEL HOUSING SAE #3 LHS
1503_RE59281	FLYWHEEL, 11.5in OC CLUTCH
166M_RE520795	FUEL INJECTION PUMP - DE10
1785_RE520825	AIR INLET
1954_RE503614	OIL PAN
2001_RE58175	WATER PUMP PULLEY
2150_RE520875	THERMOSTAT COVER
2206_RE502827	THERMOSTAT
2399_RE59786	NO FAN DRIVE
240N_RE502537	FAN BELT WITH BELT GUARD
2599_RE59725	NO FAN
2699F_RE59760	NO BLOCK HEATER
2703_RE503631	HEAT EXCHANGER
2843_RE503623	EXHAUST MANIFOLD
2915_RE501631	VENT HOSE
3006_RE70964	STARTING MOTOR, 12V NIPPONDENSO R4
3138_RE509779	ALTERNATOR - 12V, 65 AMP
35DH_RE520838	FUEL FILTER
3602_RE58179	FRONT PLATE
3701_RE57626	FUEL TRANSFER PUMP
3999_RE59829	NO THERMOSTAT HOUSING
4002_RE58181	STANDARD RHS DIPSTICK
4199_RE59748	NO FRONT AUX DRIVE
4399_RE59828	NO STARTING AID
4412_RE502557	TIMING GEAR COVER
4501_RE501264	SHAFT BALANCER (HEAVY DUTY)
4614_RE507535	BLOCK
4715_RE515513	CRANKSHAFT
4822_RE508086	CONNECTING RODS
4901_RE57618	VALVE ACTUATING MECHANISM
5001_RE57763	OIL INTAKE
5102_RE59432	CYLINDER HEAD, HIGH SWIRL
5202_RE59502	AUXILIARY DRIVE
5399_RE509683	NO FUEL HEATER
5709_RE504712	WATER PUMP INLET
5901_RE59752	OIL COOLER
6099_RE60169	NO AUX DRIVE PULLEY
6202_RE59734	ALTERNATOR MOUNTING
6351_RE520792	LOW PRESSURE FUEL LINES
6403_RE50015	EXHAUST ELBOW - DRY
6585_RE504815	TURBOCHARGER
6698_RE500556	NO TEMPERATURE SWITCH
6716_RE521445	TACHOMETER SENSORS
6901_RE59440	SERIAL NUMBER PLATE
7499_RE59761	NO A/C MOUNTING
7699_RE60160	NO OIL PRESSURE SWITCH
8020_RE502546	PUMP, SEA WATER
8150_RE520918	FUEL FILTER
8499_RE509757	NO WIRING HARNESS
8699_RE59784	NO FAN PULLEY
8712_RE502596	BELT TENSIONER, MANUAL
8843_RE508950	OIL FILTER, REAR
9826_RE518085	ENGINE HANGER STRAP

FOR CENTER-OF-GRAVITY INFORMATION, REFER TO THE ENGINE PERFORMANCE CURVE(S).

FAN HEIGHT mm/in

ORIGIN - CENTERLINE OF CRANKSHAFT AT REAR FACE OF BLOCK

MODEL RL	MODEL REV
RESTRICTED	1.2
DRW RL	DRW REV
RESTRICTED	1.2*
SOURCING	OPEN
	CLOSED

MATERIAL	SEE DETAILS
DATE	26MAR04
ORIGINATOR	MJG

THIS DRAWING AND ALL INFORMATION CONTAINED HEREIN ARE THE PROPERTY OF DEERE & COMPANY. IT IS TO BE USED ONLY AS AUTHORIZED BY DEERE & COMPANY. ALL RIGHTS ARE RESERVED.	
DEERE & COMPANY MOLINE, ILLINOIS 61265	
LOCATION DRAWING 4.5L (CD4045TFM75) MARINE	
SCALE	1:5
METRIC	
DATE	26MAR04
ORIGINATOR	MJG

SIZE	C	PART NUMBER	RE523686
VERSION	RG40	DATE	
REV	A	SCALE	1:5
SHEET	1/8	METRIC	
		DATE	
		ORIGINATOR	MJG

Pro/ENGINEER

# PowerTech 4.5 L ENGINE

# 4045TFM75 (HE)

4	3	2	1
<b>CUSTOMER INSTALLATION POINTS</b>		<b>CUSTOMER INSTALLATION POINTS</b>	
ITEM	SHEET	NAME	REMARKS
A11	5	AIR - TURBO INLET	
A12	3	AIR - STARTING AID PORT	7/8-14 UNF-2B
A13	3	AIR PRESSURE PORT PLUGGED	
BR1	3	BRACKET - REAR LIFT STRAP	
BR2	5	BRACKET - FRONT LIFT STRAP	
CO1	4	COOLANT - HEATER SUPPLY	
CO2	3	COOLANT - HEATER RETURN	
CO3	3	COOLANT - BLOCK HEATER	1 5/8-12 UN-2B
CO4	6	COOLANT - INLET	51 [2] OD; 23 ENGAGEMENT
CO5	6	COOLANT - OUTLET	
CO6	6	COOLANT - TEMP. WARNING SWITCH	
CO7	5	COOLANT - TEMPERATURE SENSOR	
CO8	3	COOLANT - HEATER/OUTLET OPTIONAL	1 5/8-12 UN-2B
DR1	4	DRIVE - AUXILLARY	SEE OPTION DRAWING
EL1	5	FUEL INJECTION PUMP	SEE OPTION DRAWING
EL2	6	ALTERNATOR	SEE OPTION DRAWING
EL3	3 or 5	STARTER MOTOR	SEE OPTION DRAWING
EL4	7	MAG PICKUP	M20 X 1.5-6H
EL5	3 or 5	STARTER - BATTERY TERMINAL	SEE OPTION DRAWING
EX1	5	EXHAUST OUTLET	
FL1	3	FUEL - INLET	
FL2	7	FUEL - LEAKOFF FRONT	
FL3	7	FUEL - LEAKOFF REAR	
MO1	6	MOUNTING HOLES - ENGINE	4X M16 X 2.00-6H $\nabla$ 31.5
MO2	6	MOUNTING HOLES - FRONT	2X $\phi$ 15.926 $\pm$ 0.025 [1.627 $\pm$ .001]
MO3	3,5	MOUNTING HOLES - ENGINE	6X M12 X 1.75-6H $\nabla$ 22
MO4	6	MOUNTING HOLES - FAN	
MO5	4	MOUNTING HOLES - ACCESSORY	2X M10 X 1.5-6H $\nabla$ 18.5
MO6	5	MOUNTING HOLES - SPEED CNTRL BRKT	2X M10 X 1.5-6H $\nabla$ 18.5
MO7	3	MOUNTING HOLES - ACCESSORY	2X M8 X 1.25-6H $\nabla$ 14 (BLOCK)
MO8	5	MOUNTING HOLES - ACCESSORY	M14 X 2-6H $\nabla$ 23
MO9	4	MOUNTING HOLES - FLYWHEEL HSG	
MO10	3,5	MOUNTING HOLES - OIL FILL	4X M8 X 1.25-6H $\nabla$ 15 (BLOCK)
MO11	3	MOUNTING HOLES - FW HSG MOUNTS	
MO12	5	MOUNTING HOLE - ACCESSORY	M10 X 1.50-6H $\nabla$ 18.5
MO13	5	MOUNTING HOLES - ACCESSORY	
MO14	3	MOUNTING HOLE - ACCESSORY	

ITEM	SHEET	NAME	REMARKS
MO15	7	MOUNTING HOLES - ACCESSORY	2X M10 X 1.50-6H $\nabla$ 18.5
MO16	7	MOUNTING HOLES - ACCESSORY	M12 X 1.75-6H $\nabla$ 22
MO17	7	MOUNTING HOLES - ACCESSORY	3X M10 X 1.50-6H $\nabla$ 18.5
MO18	7	MOUNTING HOLES - ACCESSORY	M12 X 1.75-6H $\nabla$ 22
MO19	6	MOUNTING HOLES - FAN	
MO20	4	MOUNTING HOLES - FLYWHEEL	
MO21	6	MOUNTING HOLES - DRIVE PULLEY	
MO22	3	MOUNTING HOLES - ACCESSORY	3X M10 X 1.5-6H $\nabla$ 18.5
MO23	7	MOUNTING HOLES - ACCESSORY	M12 X 1.75-6H $\nabla$ 25
MO24	5	MOUNTING HOLES - ACCESSORY	M14 X 2-6H $\nabla$ 23
OP1	5	OIL PRESSURE PORT	4X 1/8-27 NPTF
OP2	5	OIL - TURBO DRAIN	
VE1	3	VENT TUBE	19.05 ID HOSE

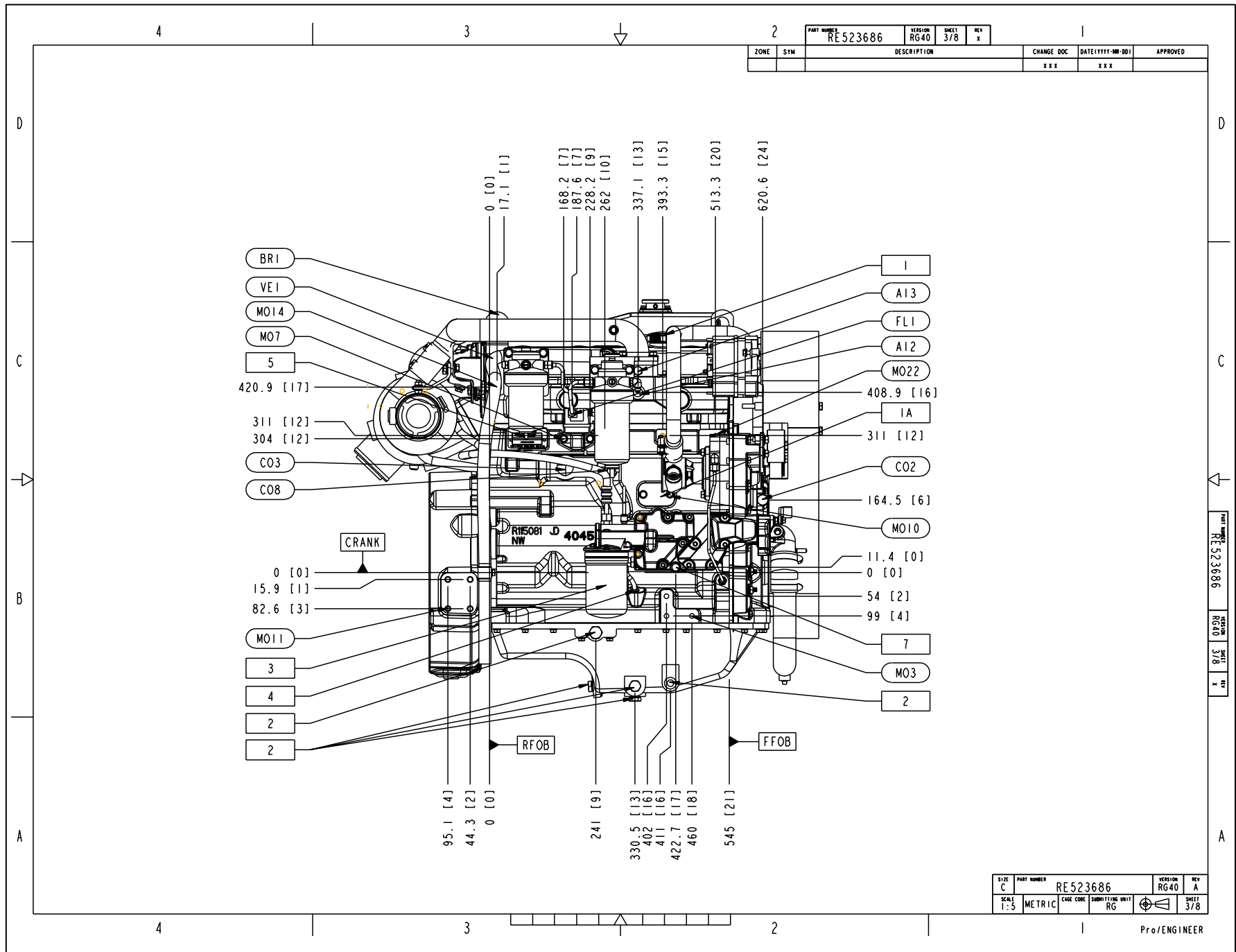
<b>CUSTOMER SERVICE POINTS</b>			
ITEM	SHEET	NAME	REMARKS
1	3	OIL FILL - HEAD COVER	20MM REMOVAL CLEARANCE
1A	3	OIL FILL - RIGHT SIDE	20MM REMOVAL CLEARANCE
1B	5	OIL FILL - LEFT SIDE	20MM REMOVAL CLEARANCE
2	3,5	OIL DRAIN - PAN	
3	3	OIL FILTER	25MM REMOVAL CLEARANCE
4	3	DIPSTICK - RIGHT SIDE	275MM REMOVAL CLEARANCE
4A	5	DIPSTICK - LEFT SIDE	275MM REMOVAL CLEARANCE
5	3	FUEL FILTER DRAIN	5MM REMOVAL CLEARANCE
6	5	COOLANT DRAIN	1/4-18 NPTF / 10MM REMOVAL CLEARANCE
7	3	OIL COOLER WATER DRAIN	M12 X 1.5 / 25MM REMOVAL CLEARANCE

SIZE C	PART NUMBER RE523686	VERSION RG40	SHEET 2/8	REV A
SCALE 1:5	METRIC	DATE CODE	UNIT RG	PRO/ENGINEER

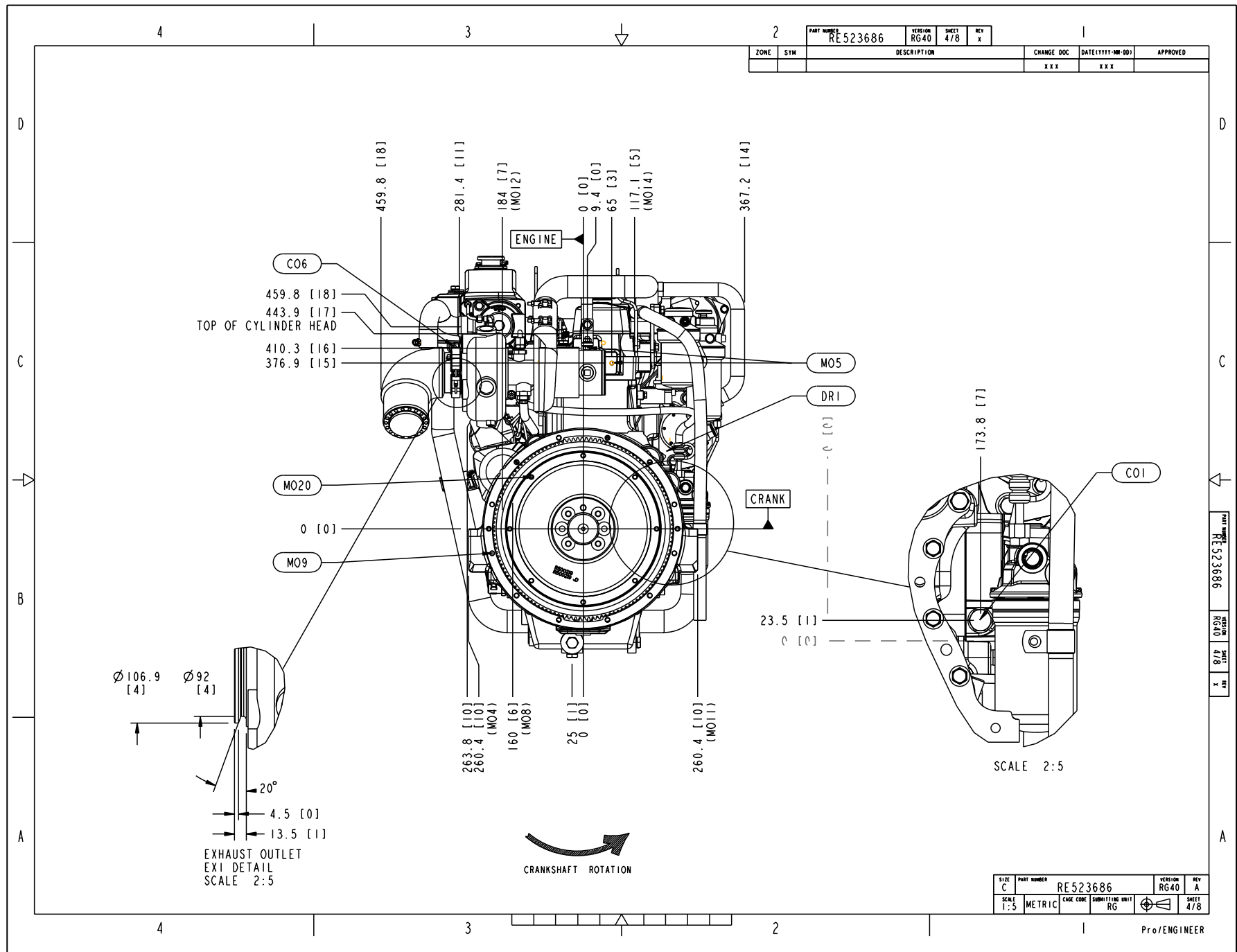
# PowerTech 4.5 L ENGINE

# 4045TFM75 (HE)



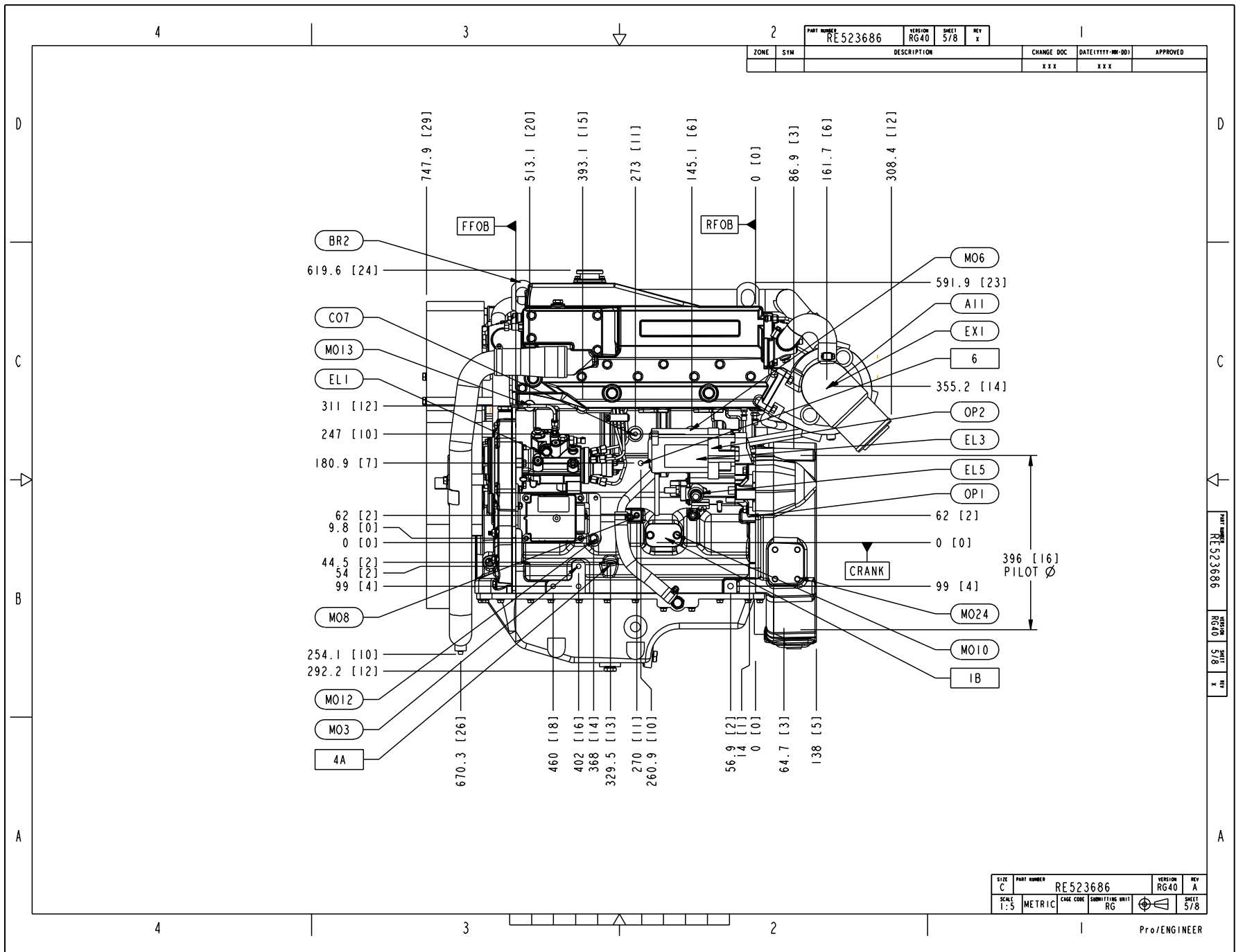
# PowerTech 4.5 L ENGINE

# 4045TFM75 (HE)



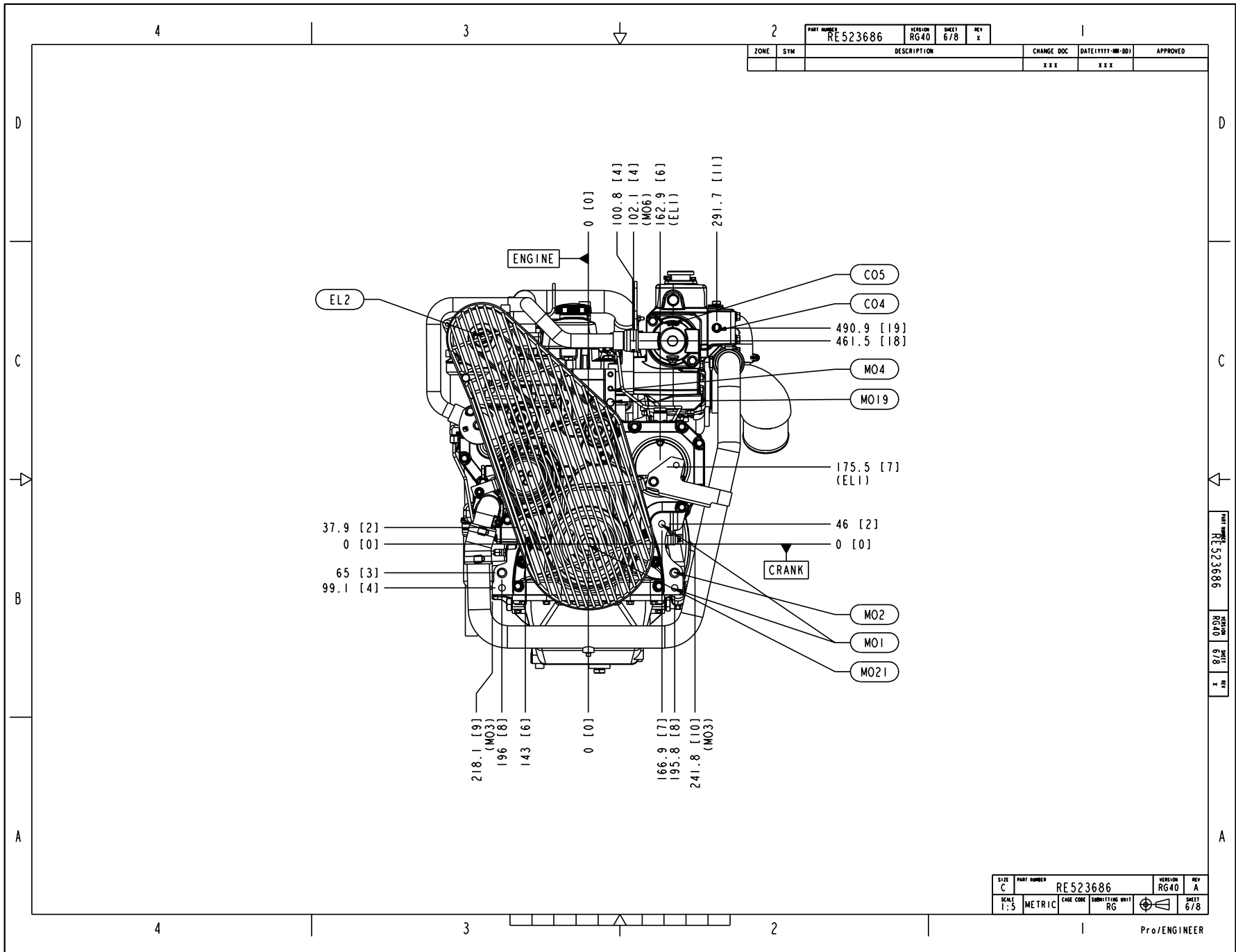
# PowerTech 4.5 L ENGINE

# 4045TFM75 (HE)



# PowerTech 4.5 L ENGINE

# 4045TFM75 (HE)



PART NUMBER RE523686		VERSION RG40	SHEET 6/8	REV X	
ZONE	SYM	DESCRIPTION	CHANGE DOC	DATE (YYYY-MM-DD)	APPROVED
			XXX	XXX	

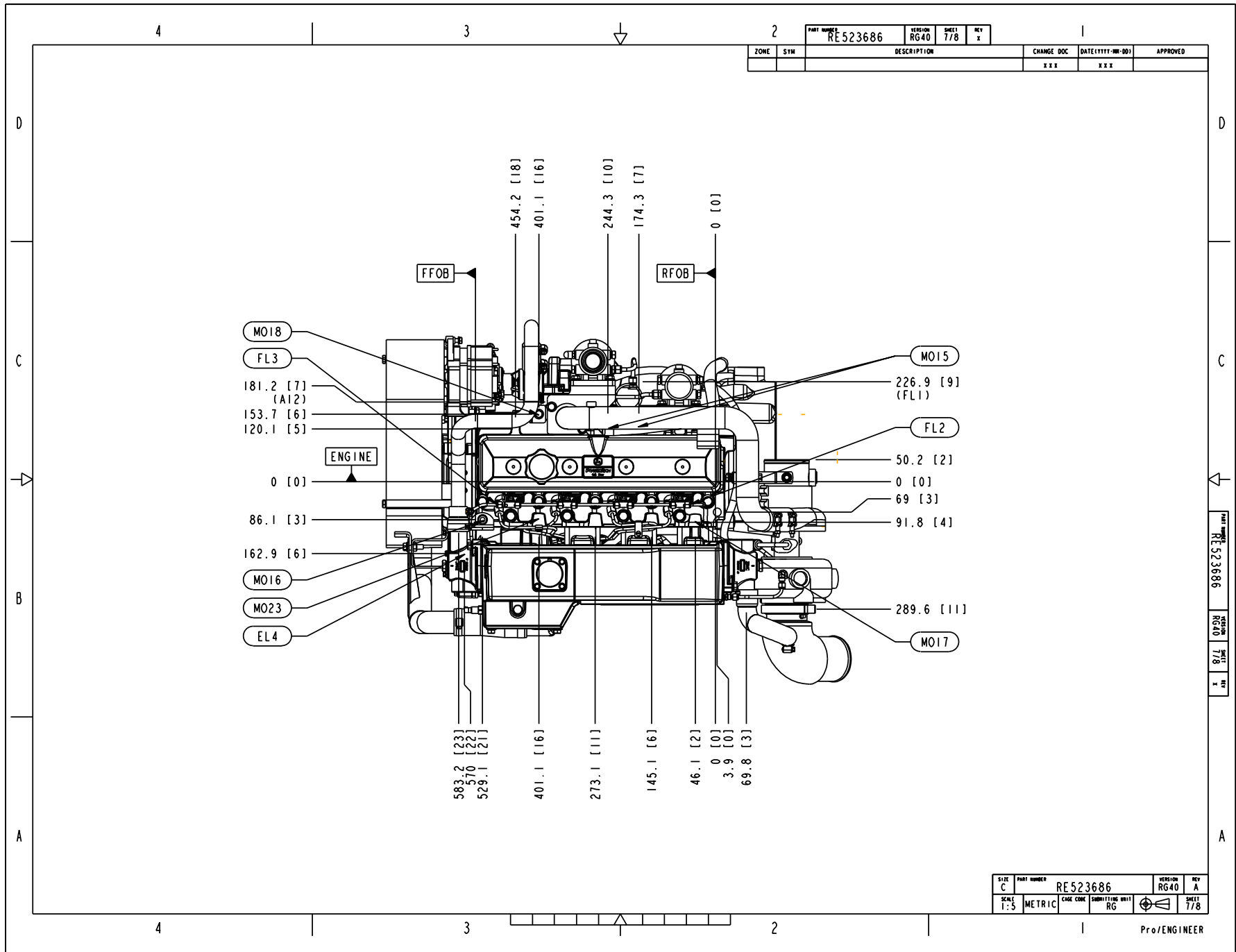
SIZE C	PART NUMBER RE523686	VERSION RG40	REV A
SCALE 1:5	METRIC	CAGE CODE RG	SHEET 6/8

RE523686  
RG40  
6/8  
X

Pro/ENGINEER

# PowerTech 4.5 L ENGINE

# 4045TFM75 (HE)



# PowerTech 4.5 L ENGINE

# 4045TFM75 (HE)

